



Certificate of Analysis

CANNABUSINESS LABORATORIES, LLC

Customer:

Two Hemp Connoisseurs
PO Box 40
Champion, PA 15622

Sample ID **230105023**
Order Number **CB230105008**
Sample Name **CBD Hemp Flower**

External Sample ID

Received Date **1/6/2023**
COA Released **1/10/2023**

Batch Number **THC-FW-CBD**
Product Type **Flower**
Sample Type **Flower**

Comments

CANNABINOID PROFILE

Analyte	LOQ (%)	% Dry Weight	mg/g
CBC	0.01	0.066	0.660
CBD	0.01	0.930	9.295
CBDa	0.01	11.95	119.5
CBDV	0.01	ND	ND
CBG	0.01	0.021	0.210
CBGa	0.01	0.287	2.871
CBN	0.01	ND	ND
d8-THC	0.01	ND	ND
d9-THC	0.01	0.076	0.763
THCa	0.01	0.470	4.701
Total Cannabinoids		13.80	138.0
Total Potential THC		0.489	4.886
Total Potential CBD		11.41	114.1
Total Potential CBG		0.273	2.731

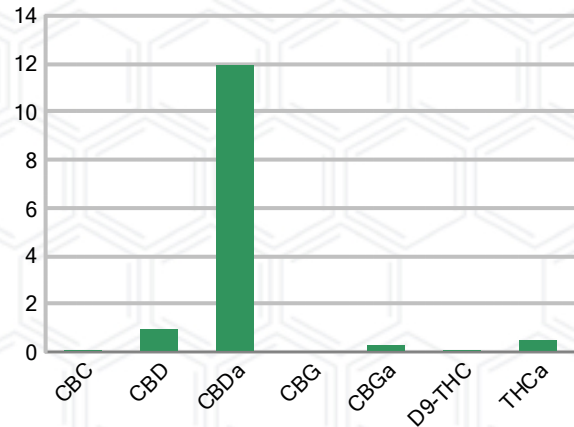
Ratio of Total Potential CBD to Total Potential THC **23.33 : 1**

Ratio of Total Potential CBG to Total Potential THC **0.56 : 1**

SAMPLE IMAGE



CANNABINOIDS % Dry Weight



*Total Cannabinoids refers to the sum of all cannabinoids detected.

*Total Potential CBD = (0.877 x CBDa) + CBD. *Total Potential THC = (0.877 x THCa) + THC. *Total Potential CBG = (0.877 x CBGa) + CBG.

*Total Potential THC/CBD are calculated to take into account the loss of an acid group during decarboxylation.



J. Hobgood
Laboratory Manager

SIGNATURE

Jamie Hobgood

LABORATORY MANAGER

01/10/2023 9:38 AM

DATE

This product has been tested by CannaBusiness Laboratories using validated testing methodologies and a quality system. Values reported relate only to the product tested. CannaBusiness Laboratories makes no claims as to the efficacy, safety, or other risks associated with any detected or non-detected levels of any compounds reported herein. This Certificate shall not be reproduced except in full, without the written permission of CannaBusiness Laboratories. Photo is of sample received by the lab and may vary from final packaging. The results apply to the sample as received.



Certificate of Analysis

CANNABUSINESS LABORATORIES, LLC

Customer

Two Hemp Connoisseurs
PO Box 40
Champion, PA 15622



Overall Batch Results	
Pesticide	Moisture Content
Potency	Water Activity
Mycotoxins	Heavy Metals
Microbial Screen	Residual Solvents
Terpenoids	

Sample Name: CBD Hemp Flower

Sample ID: 230105023

Order Number: CB230105008

Product Type: Flower

Sample Type: Flower

Received Date: 01/06/2023

Batch Number: THC-FW-CBD

COA released: 01/10/2023 9:38 AM

Potency (mg/g) Dry Weight

Date Tested: 01/09/2023

Method: CB-SOP-028

Instrument:

0.489 % Total THC	11.41 % Total CBD	13.80 % Total Cannabinoids	138.0 mg/g Total Cannabinoids
-----------------------------	-----------------------------	--------------------------------------	---

Analyte	Result	Units	LOQ	Result	Units
CBC (Cannabichromene)	0.066	%	0.010	0.660	mg/g
CBD (Cannabidiol)	0.930	%	0.010	9.295	mg/g
CBDa (Cannabidiolic Acid)	11.95	%	0.010	119.5	mg/g
CBDV (Cannabidivarin)	ND	%	0.010	ND	mg/g
CBG (Cannabigerol)	0.021	%	0.010	0.210	mg/g
CBGa (Cannabigerolic Acid)	0.287	%	0.010	2.871	mg/g
CBN (Cannabinol)	ND	%	0.010	ND	mg/g
D8-THC (D8-Tetrahydrocannabinol)	ND	%	0.010	ND	mg/g
D9-THC (D9-Tetrahydrocannabinol)	0.076	%	0.010	0.763	mg/g
THCa (Tetrahydrocannabinolic Acid)	0.470	%	0.010	4.701	mg/g

Potency (mg/g) Dry Weight

Date Tested: 01/09/2023

Method: CB-SOP-028

Instrument:

Analyte	Result	Units	LOQ	Result	Analyte	Result	Units	LOQ	Result
Percent Moisture	8	%	0.010						



J. Hobgood
Laboratory Manager

Jamie Hobgood

01/10/2023 9:39 AM

SIGNATURE

DATE

NT = Not tested, ND = Not detected; LOQ = Limit of Quantitation; <LOQ = Detected; >ULOL = Above upper limit of linearity; CFU/g = Colony forming units per 1 gram; TNTC = Too numerous to count

This product has been tested by CannaBusiness Laboratories using validated testing methodologies and a quality system. Values reported relate only to the product tested. CannaBusiness Laboratories makes no claims as to the efficacy, safety, or other risks associated with any detected or non-detected levels of any compounds reported herein. This Certificate shall not be reproduced except in full, without the written permission of CannaBusiness Laboratories. Photo is of sample received by the lab and may vary from final packaging. The results apply to the sample as received.